



1277

1277 Original GENE SIMMONS KISS Vest from the HOT IN THE SHADE Tour 1990. A custom biker's style black leather vest with "skull" adornment on front and back, chains on front and Python snakeskin on front pocket and on back. See Color Illustration Estimate 2,000/3,000

1278

1278 Original GENE SIMMONS KISS Vest from the HOT IN THE SHADE Tour 1990. A custom biker's style black leather vest with large painted "dragon head" design on back. See Color Illustration Estimate 2,000/3,000



1279

1279 Original GENE SIMMONS KISS Jacket from the HOT IN THE SHADE Tour 1990. A black faux leather custom biker's style jacket with "dragon," SIMMONS's face, flame and snake painted designs, assorted flag and miscellaneous patches throughout with pyramid studding in lapels and round metal studding on shoulders and bottom. See Color Illustration Estimate 4,000/6,000



1280

1280 Original GENE SIMMONS KISS Jacket from HOT IN THE SHADE Tour 1990. A black faux leather custom biker's style waist-length jacket with brass and silver studding designs throughout with silver brooches on lapels. See Color Illustration Estimate 3,000/5,000

1281 Original GENE SIMMONS KISS Jacket from HOT IN THE SHADE Tour 1990. A custom brown leather biker's style jacket with large round brass studs covering sleeves, collar and lapels. See Color Illustration Estimate 3,000/5,000

1282 Original PAUL STANLEY Personally Owned Album Cover Art Design 1990. An original art design layout with PAUL STANLEY handwritten notes and description outlining the HOT IN THE SHADE layout design. Matted and Framed Overall Size: 14 1/2 inches by 17 inches Estimate 400/600



1281



1283

1283 Original PAUL STANLEY KISS Guitar Strap from the HOT IN THE SHADE Tour 1990. A custom 2 inch wide and 62 inch long guitar strap with conchos and small metal studs and silver stitching along edges. See Color Illustration Estimate 200/300



1285

1285 Original PAUL STANLEY KISS Guitar Strap from the HOT IN THE SHADE Tour 1990. A custom 2 inch wide and 60 inch long black leather guitar strap adorned with round and square conchos and small silver studs. See Color Illustration Estimate 200/300



1284

1284 Original PAUL STANLEY KISS Guitar Strap from the HOT IN THE SHADE Tour 1990. A custom 2 inch wide and 62 inch long black leather guitar strap with assorted shaped conchos, small round metal studs and metal eyelets with leather fringe. See Color Illustration Estimate 200/300



1286

1286 Original PAUL STANLEY KISS Guitar Strap from the HOT IN THE SHADE Tour 1990. A custom 2 inch wide and 63 inch long black leather guitar strap adorned with conchos and small silver studs. See Color Illustration Estimate 200/300





1287
Original PAUL STANLEY KISS Guitar
Used on the HOT IN THE SHADE/
REVENGE Tours

1990-1994
An original Gibson Chet Atkins 12-string acoustic/electric guitar finished in black with cream binding and wood faced headstock with KISS/PAUL STANLEY guitar picks attached to side of guitar. Comes complete with 2 inch wide black leather guitar strap with silver stitching, conchos and pyramid studding. Serial number 83419526. Comes with original black hardshell case with KISS inventory barcode.
See Color Illustration
Estimate 3,000/5,000



1287

1288
Original PAUL STANLEY KISS Stage Shoes from the
HOT IN THE SHADE Tour

1990
A pair of customized black Nike stage shoes with silver studding on toe and rear of shoe.
Estimate 600/800



1288

1289
Original PAUL STANLEY KISS Stage
Shoes from the HOT IN THE SHADE Tour

1990
A pair of customized black Nike stage shoes with two sets of customized black leather studding boot straps. One pair with custom studding ornamentation and leather lacing and the other with customized studded leather boot straps.
See Color Illustration
Estimate 600/800



1289



1290



1290

1290
Original PAUL STANLEY KISS Vests from the HOT IN
THE SHADE Tour

1990
A group of five custom rose vine patterned, lace-style vests in shades of purple, dark blue, blue, dark green and copper.

Purple and Copper Ones Are Illustrated
Estimate 4,000/5,000



1291

1291
Original PAUL STANLEY KISS Vest
from the HOT IN THE SHADE Tour

1990
A custom dark muted brown and blue vest with blue, red and black rhinestones throughout.

See Color Illustration
Estimate 750/1,000



1292

1292
Original PAUL STANLEY KISS
Vest from the HOT IN THE
SHADE Tour

1990
A black patterned vest with custom buttons.

See Color Illustration
Estimate 750/1,000

1293
Original PAUL STANLEY KISS
Vest from the HOT IN THE
SHADE Tour

1990
A custom purple and black patterned lace style vest with small purple rhinestones.

See Color Illustration
Estimate 750/1,000





1294

1294
Original PAUL STANLEY KISS Vest
from the HOT IN THE SHADE Tour
1990

A custom green and black
patterned lace style vest with small
green rhinestones.
See Color Illustration
Estimate 750/1,000



1295

1295
Original PAUL STANLEY KISS
Vest from the HOT IN THE SHADE
Tour
1990

A custom white and black
patterned lace style vest with small
rhinestones.
See Color Illustration
Estimate 750/1,000



1296

1296
Original PAUL STANLEY KISS Vest
from the HOT IN THE SHADE Tour
1990

A custom red and black patterned
lace style vest with small red
rhinestones.
See Color Illustration
Estimate 750/1,000



1297

1297
Original PAUL STANLEY KISS Vest
from the HOT IN THE SHADE Tour
1990

A custom black cotton vest
covered with vintage-style
motorcycle patches.
See Color Illustration
Estimate 1,500/2,500



1298

1298
Original PAUL STANLEY KISS Jacket
from the HOT IN THE SHADE Tour
1990

A teal faux leather jacket with round
metal, square, and diamond-shaped
studding and rhinestones throughout
with black mesh and fringe adornment
on sides, sleeves and back.
See Color Illustration
Estimate 2,500/3,500



1299

1299
Original PAUL STANLEY KISS
Jacket from the HOT IN THE
SHADE Tour
1990

A black faux leather jacket with
round metal, square, and
diamond-shaped studding and
rhinestones throughout with black
mesh and fringe adornment on
sides, sleeves and back.
See Color Illustration
Estimate 3,000/4,000



1300

1300
Original PAUL STANLEY KISS
Denim Jacket from HOT IN THE
SHADE Tour
1990

A custom stone-washed denim
jacket with an assortment of New
York pins, patches and
accessories along with
rhinestones and reflectors, with
New York skyline painted on back
adorned with rhinestones and
stars.
See Color Illustration
Estimate 1,500/2,500

1303
Original KISS Vest Worn by BRUCE
KULICK from the HOT IN THE
SHADE Tour
1990

A custom blue iridescent vest with
black lining.
See Color Illustration
Estimate 1,000/1,500



1301

1301
Original KISS Vest Worn by
BRUCE KULICK from the HOT IN
THE SHADE Tour
1990

A custom copper iridescent vest
with black lining.
See Color Illustration
Estimate 1,000/1,500



1302

1302
Original KISS Vest Worn by BRUCE
KULICK from the HOT IN THE
SHADE Tour
1990

A custom black cotton vest with an
Indian-inspired motif with padded
gold elephants.
See Color Illustration
Estimate 500/750



1303





1304

1304
Original KISS Vest Worn By BRUCE KULICK from the HOT IN THE SHADE Tour
1990
A custom black faux leather vest with red, yellow and silver stitched designs on the right side.
See Color Illustration
Estimate 1,000/1,500



1305

1305
Original KISS Vest Worn By BRUCE KULICK from the HOT IN THE SHADE Tour
1990
A black faux leather vest with white stitched designs on front.
See Color Illustration
Estimate 1,500/2,000



1306

1306
Original KISS Sleeveless Jacket Worn by BRUCE KULICK from the HOT IN THE SHADE Tour
1990
A black faux leather biker's style sleeveless jacket with round metal studding on lapels.
See Color Illustration
Estimate 1,500/2,500



1307

1307
Original KISS Jacket Worn by BRUCE KULICK from the HOT IN THE SHADE Tour
1990
A black faux leather biker's style jacket with large ring studs throughout.
See Color Illustration
Estimate 1,500/2,000



1308

1308
Original KISS Jacket Worn by BRUCE KULICK from the HOT IN THE SHADE Tour
1990
A black faux leather custom biker's style jacket with silver metal studding covering sleeves.
See Color Illustration
Estimate 1,500/2,000



1309

1309
Original KISS Jacket Worn by BRUCE KULICK from the HOT IN THE SHADE Tour
1990
A black plastic custom biker's style jacket with round and square mirrored pieces covering sleeves.
See Color Illustration
Estimate 1,500/2,000



1310

1310
Original KISS Jacket Worn By BRUCE KULICK from the HOT IN THE SHADE Tour
1990
A blue faux suede custom jacket with black rhinestone and beaded designs on shoulder and sleeves.
See Color Illustration
Estimate 1,500/2,000



1311

1311
Original KISS Jacket Worn By BRUCE KULICK from the HOT IN THE SHADE Tour
1990
A sienna-colored faux suede custom jacket with black studded and beaded designs on shoulder and sleeves.
See Color Illustration
Estimate 1,500/2,000



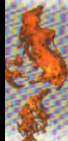
1312

1312
Original KISS Jacket Worn By BRUCE KULICK from the HOT IN THE SHADE Tour
1990
A custom black faux leather, blue velvet and paisley fabric jacket.
See Color Illustration
Estimate 1,500/2,000



1313

1313
Original KISS Jacket Worn By BRUCE KULICK from the HOT IN THE SHADE Tour
1990
A custom textured black fabric jacket adorned with round metal studs and assorted accessories with camouflage-tone mesh and black leather fringe from shoulders to sleeve.
See Color Illustration
Estimate 1,000/1,500



1314
Original BRUCE KILICK KISS
Jacket from the HOT IN THE SHADE
Tour
1990

A custom black cotton jacket with assorted metal studs, conchos and accessories adorned with multi-colored painted stripes and two-tone long fringe covering back.
See Color Illustration
Estimate 1,000/1,500



1314

1315
Original KISS Jacket Worn By BRUCE
KILICK from the HOT IN THE SHADE
Tour
1990

A custom faux zebra fur biker's style
jacket.
See Color Illustration
Estimate 1,000/1,500



1315

1316
Original KISS CONVENTION Art
Display Panel Wings Case
1995-1997

A custom black KISS flight case #89
that housed art panel "T" wings for
the 1995 KISS CONVENTION tour,
with KISS logo stenciled on the
side.
34 inches by 88 inches by 19 inches
Estimate 300/500

1320
Original KISS CONVENTION Plexiglass Display
Panels In Case
1995-1997

A set of 13 custom seven foot plexiglass display
panels housed in a custom black KISS flight case
#92 used to protect and display the world famous
KISS Museum mannequins, instruments and
drums, with KISS logo stenciled on the front top
cover.
plexiglass panels in case dimensions: 52 inches
by 23 inches by 86 inches
Estimate 600/900

1323
Original KISS CONVENTION Plexiglass Display Panels
In Case
1995-1997

A set of 13 custom seven foot plexiglass display panels
housed in a custom black KISS flight case #94 used to
protect and display the world famous KISS Museum
mannequins, instruments and drums, with KISS logo
stenciled on the front top cover.
plexiglass panels in case dimensions: 52 inches by 23
inches by 86 inches
Estimate 600/900

1317
Original KISS CONVENTION Art
Display Panel Case
1995-1997

A custom black KISS flight case #88
that housed four art panels for the
1995 KISS CONVENTION tour, with
KISS logo stenciled on the side.
54 inches by 87 inches by 23 inches
Estimate 300/500

1321
Original KISS CONVENTION Plexiglass Display
Panels In Case
1995-1997

A set of 13 custom seven foot plexiglass display
panels housed in a custom black KISS flight case
#81 used to protect and display the world famous
KISS Museum mannequins, instruments and drums,
with KISS logo stenciled on the front top
cover.
plexiglass panels in case dimensions: 52 inches
by 23 inches by 86 inches
Estimate 600/900

1324
Original KISS CONVENTION Plexiglass Display Panels
In Case
1995-1997

A set of 13 custom seven foot plexiglass display panels
housed in a custom black KISS flight case #95 used to
protect and display the world famous KISS Museum
mannequins, instruments and drums, with KISS logo
stenciled on the front top cover.
plexiglass panels in case dimensions: 57 inches by 23
inches by 86 inches
Estimate 600/900

1318
Original KISS CONVENTION Art
Display Panel Case
1995-1997

A custom black KISS flight case #87
that housed nine art panels for the
1995 KISS CONVENTION tour, with
KISS logo stenciled on the side.
48 inches by 87 inches by 23 inches
Estimate 300/500

1322
Original KISS CONVENTION Plexiglass Display
Panels In Case
1995-1997

A set of 13 custom seven foot plexiglass display
panels housed in a custom black KISS flight case
#93 used to protect and display the world famous
KISS Museum mannequins, instruments and drums,
with KISS logo stenciled on the front top cover.
plexiglass panels in case dimensions: 52 inches by
23 inches by 86 inches.
See Color Illustration
Estimate 600/900

1325
Original KISS CONVENTION Tour Programs
1995

A collection of approximately 6,000 four-color
commemorative 32-page tour program booklets from
the KISS CONVENTION Tour. This program outlines the
convention schedule, displays and memorabilia.
11 inches by 7 inches
Estimate 6,000/9,000



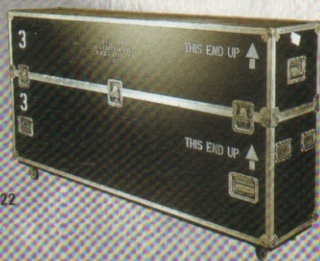
1326

1326
Original KISS CONVENTION Magazine/Art
Panels
1995

A group of seven individual black wood
and plexiglass covered two-sided display
panels, housed in a custom black KISS
flight case #96, containing 300 KISS
magazine covers reproduced full-size on
top panel sides, with additional KISS STORY
advertisements on two-panel sides. Panels
are complete with attachable slams for
set-up and display and comes with a
customized black KISS flight case with
KISS logo painted on front.
Note: These panels were used as displays
for the 1995 KISS CONVENTION and
Museum World Tour.
Individual Panel Size: 84 inches by 48
inches
Case Size: 57 inches by 86 inches by 22
inches
See Color Illustration
Estimate 3,000/5,000

1319
Original KISS CONVENTION
Plexiglass Display Panels In Case
1995-1997

A set of 13 custom seven foot
plexiglass display panels housed in a
custom black KISS flight case #90
used to protect and display the
world famous KISS Museum
mannequins, instruments and drums,
with KISS logo stenciled on the
front top cover.
plexiglass panels in case
dimensions: 52 inches by 23 inches
by 86 inches.
Estimate 600/900



1322



57

1327
Original KISS CONVENTION Costumed Mannequins
Case
1995-1997

A custom black KISS flight case #811 that housed four KISS Museum mannequins with plexiglass base and metal stands for the 1995 KISS CONVENTION tour, with KISS logo stencilled on the side
56 inches by 85 inches by 39 inches
Estimate 600/800

1328
Original KISS CONVENTION Costumed Mannequins
Case
1995-1997

A custom black KISS flight case #812 that housed four KISS Museum mannequins for the 1995 KISS CONVENTION tour, with KISS logo stencilled on the side
56 inches by 85 inches by 39 inches
Estimate 600/800

1329
Original KISS CONVENTION Costumed Mannequins
Case
1995-1997

A custom black KISS flight case #813 that housed four KISS Museum mannequins for the 1995 KISS CONVENTION tour, with KISS logo stencilled on the side
56 inches by 85 inches by 39 inches
Estimate 600/800

1330
Original KISS CONVENTION Costumed Mannequins
Case
1995-1997

A custom black KISS flight case #814 that housed four KISS Museum mannequins for the 1995 KISS CONVENTION tour, with KISS logo stencilled on the side
56 inches by 85 inches by 39 inches
Estimate 600/800

1331
Original KISS CONVENTION Costumed Mannequins
Case
1995-1997

A custom black KISS flight case #815 that housed four KISS Museum mannequins for the 1995 KISS CONVENTION tour, with KISS logo stencilled on the side
56 inches by 85 inches by 39 inches
Estimate 600/800

1332
Original KISS Laminated Passes from the KISS
CONVENTION Tour
1995

A box of approximately 1,000 worldwide KISS CONVENTION laminated convention passes from the Australian convention tour with string lanyards. Each pass is individually numbered on the back side.
5 inches by 4 inches
Estimate 3,000/5,000

1333
Original KISS Laminated Passes from the KISS
CONVENTION Tour
1995

A box of approximately 1,500 worldwide KISS CONVENTION laminated convention passes from the United States/Canada convention tour with string lanyards. Laminates include staff passes, exhibitor passes and convention passes, all ranging in color depicting different cities and are numbered on the back side.
5 inches by 3 inches
Estimate 5,000/7,500

1334
Original KISS Laminated Pass Inserts from the KISS
CONVENTION Tour
1995

A box of approximately 10,000 worldwide KISS CONVENTION laminated convention pass inserts from the United States/Canada convention tour. Four color inserts include staff passes, management passes, and convention passes, all ranging in color depicting different cities and are numbered on the back side.
4 inches by 2 1/2 inches
Estimate 5,000/10,000

1335
Original KISS Laminated Pass Insert Sheets from the KISS
CONVENTION Tour
1995

A collection of approximately 100 four color printed sheets of uncut convention laminate inserts from the United States/Canada convention tour. Each sheet contains the 32 different passes used on the tour including convention passes, exhibitor pass, staff pass and management pass.
19 inches by 25 inches
Estimate 4,000/6,000

1336
Original KISS CONVENTION Promotional Posters
1995

A group of approximately 2,000 black and white KISS CONVENTION promotional posters, housed in 16 boxes from various US and Canadian cities on the tour.
18 inches by 14 inches
Estimate 3,000/4,000

1337
Original KISS Rubber Stamps Used on the KISS CONVENTION
Tour
1995

A set of twenty rubber stamps each depicting a KISS song title, i.e., UNHOLY, STRUTTER and MAINLINE. Stamps were used on the US/Canadian CONVENTION Tour as an in and out privilege stamp.
Various Sizes
Estimate 400/600

1338
Original KISS CONVENTION Postcards
1995

Three boxes of approximately 15,000 black and white KISS CONVENTION postcards used as promotion for the 1995 KISS CONVENTION Tour.
5 inches by 7 inches
Estimate 1,500/2,500

1339
Original KISS Stage Backdrop Used on the KISS
CONVENTION Tour
1995

An original black and white canvas stage backdrop featuring the KISS CONVENTION logo.
20 feet by 40 feet
Estimate 2,000/3,000

1340



1340
Original KISS GENE SIMMONS Bass Amplifier
and Case Used on the KISS CONVENTION Tour
1995

An original Ampeg B2 Combo bass amplifier with a custom black KISS flight case with KISS logo stencilled on the sides.
Note: This amplifier was used by GS onstage for their legendary KISS Unplugged performance and recording in New York City in August 1995.
amplifier in case dimensions: 28 inches by 19 inches by 28 inches
See Color Illustration
Estimate 700/900

1341



1341
Original KISS Flight Case Used on the KISS CONVENTION Tour 1995

An original black accessories trunk filled with a packaging quilt, plexiglass cases and a guitar stand with the KISS logo stencilled on the front.

24 inches by 39 inches by 22 inches
See Color Illustration
Estimate 400/600

1342

Original KISS Flight Case Used on the KISS CONVENTION Tour 1995

An original white cable trunk filled with extension cables, a console snake, speaker stands and microphone cables with the KISS logo stencilled on the front and back.

25 inches by 51 inches by 24 inches
See Color Illustration
Estimate 600/800

1342



1343

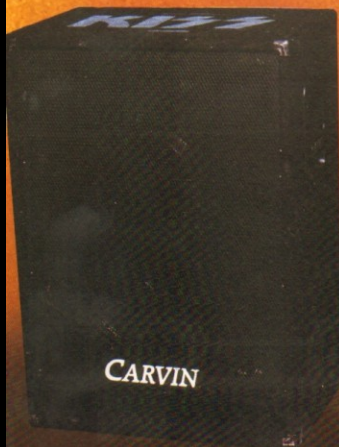


1343
Original KISS Flight Case Used on the KISS CONVENTION Tour 1995

An original black sound mixing board case included with a Carvin FX 2444 mixing board with the KISS logo stencilled on the front.

12 inches by 31 inches by 43 inches
See Color Illustration
Estimate 400/600

1344



1344
Original KISS Drum Monitor Used on the KISS CONVENTION Tour 1995

An original Carvin Model 973 12-inch drum monitor used as a drum fill for ERIC SINGER with KISS logo stencilled on top and KISS inventory barcode.

See Color Illustration
Estimate 600/900

1345



1345
Original KISS Music Monitors Used on the KISS CONVENTION Tour 1995

A set of four original Carvin Model A-22 monitors used for house music with the KISS logo stencilled on the sides and a KISS inventory barcode.

See Color Illustration
Estimate 600/800



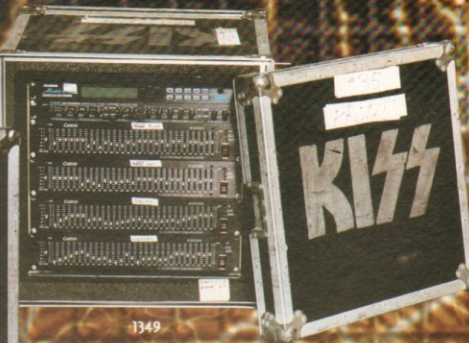


1350
Original KISS House Sound And Video Rack Used on the KISS CONVENTION Tour
1995

An original custom video and sound accessory rack complete with a Sony VP-7020 19-inch video cassette player, Videotek distribution unit, Technics five-disc CD player w/remote, Javin wireless receivers and a Javin power amplifier all mounted in a custom black KISS shock-mount flight case/rack with KISS logo stenciled on front cover, used at the front of house position for the main PA on the KISS CONVENTION tour.
32 inches by 25 inches by 25 inches
See Color Illustration
Estimate 800/700



1349



1347
Original KISS PA Bass Cabinets Used on the KISS CONVENTION Tour
1995

A set of two JBL SR 4719A PA bass cabinets with taped notations that read Stage Right 31 A/B and Stage Left New 7. 71.25 31 A/B with both housed in black KISS flight cases and KISS inventory barcodes.
Overall Sizes: 34 inches by 52 inches by 28 inches
See Color Illustration
Estimate 400/600



1348

1348
Original KISS Sony Video Projectors Used on the KISS CONVENTION Tour
1995

A set of two Sony VPH-10440 video projectors used for video presentations on the KISS CONVENTION tour in a custom black KISS flight case with KISS logo stenciled on the side.
16 inches by 29 inches by 29 inches
See Color Illustration
Estimate 300/500

1349
Original KISS Sound Mixer Effects Rack Used on the KISS CONVENTION Tour
1995

An original effects rack complete with Alesis Midverb, Alesis dual-channel compressor/limiters and four Carvin 1/3 octave graphic EQs, all mounted in a custom black KISS flight case/rack with KISS logo stencilled on front cover and top, used at the front of house position on the KISS CONVENTION tour.
23 inches by 24 inches by 26 inches
See Color Illustration
Estimate 600/900



1346



1348



1352

1352
Original KISS Sound Amplifier Rack Used on the KISS CONVENTION Tour

1995
An original amplifier rack complete with four Alesis power amplifiers, two Crest power amplifiers, an Alesis crossover, and a Carvin crossover, all mounted in a custom black KISS shock-mount flight case/rack with KISS logo stencilled on front cover, used for the main PA on the KISS CONVENTION tour.
41 inches by 30 inches by 24 inches
See Color Illustration
Estimate 600/900



1353

1351
Original KISS Projection Screens Used on the KISS CONVENTION Tour

1995
A set of two Fast Fold 12 foot projection screens with stands used for video presentations on the KISS CONVENTION tour, both packed in separate black hard fiber cases with KISS logo stencilled on top cover.
each case measures 14 inches by 40 inches by 11 inches
See Color Illustration
Estimate 200/300



1351



1353
Original KISS Microphones in Case Used on the KISS CONVENTION

1995
An original black hardshell, foam-lined microphone case with notations on tape reading center stage, mix box, case #141 with KISS logo stencilled on front side and KISS inventory barcode. Also included are fourteen assorted microphones including a Shure SM 58 vocal microphone used by GENE SIMMONS with tape notation reading Gene, a Shure SM 58 vocal microphone used by PAUL STANLEY with a taped notation reading PAUL, a Shure SM 58 vocal microphone used by GENE SIMMONS with a taped notation reading Back-up Gene, a Shure SM 58 vocal microphone used by PAUL STANLEY with a tape notation reading Back-up Paul, a Shure SM 58 vocal microphone used by BRUCE KULICK with a taped notation reading Bruce, a Shure SM 58 vocal microphone used by ERIC SINGER with the taped notation reading Eric, a pair of Shure SM 57 microphones with taped notations reading Eric Floor 1 and Eric Floor 2, a pair of AKG D 112 microphones with taped notations reading Gene bass and Eric Kik, a set of three Sennheiser MD 504 microphones on LP elaw mike holders with taped notations reading Eric SMR Eric rack 1 Eric rack 2, a set of three Shure BG 4.0 condenser microphones with taped notations reading Eric HIL Eric OHL and Eric OHL and a Whirlwind Director Direct box used by GENE SIMMONS with a taped notation reading Gene bass DI.
Case Size: 14 inches by 17 inches by 14 inches
See Color Illustration
Estimate 3,000/5,000



Original GENE SIMMONS Personally Owned Leather Whip
1978

An original black leather "cat-o-nine-tails" style whip with a gold metal studded handle used by GS in photo shoots.
4 inches
See Color Illustration
Estimate 400/600

1354

1354

1355

Original GENE SIMMONS
Personally Owned Leather
Codpiece

1978
An original black leather bondage-style codpiece with heavy-duty silver zipper in the front used in photo shoots.
See Color Illustration
Estimate 500/700

1356

Original GENE SIMMONS KISS Codpiece/Belt
Worn on Various Tours
1980s
A custom 6 inch wide black leather codpiece/belt adorned with metal studs, plates, buckles and straps.
See Color Illustration
Estimate 500/750

Original GENE
SIMMONS Personally
Owned Belt

1978
An original 2 inch wide black leather belt with 1 inch round metal studs and smaller sized cone shape studding with futuristic silver metal buckle worn offstage.
See Color Illustration
Estimate 500/700

Original GENE SIMMONS Personally Owned Belt
Worn Offstage and in Photo Shoots
Circa 1990s

A custom 3 inch wide black leather belt adorned with round star-designed studding and various-sized round metal studs and rhinestones with a 2 inch chrome western-style star motif buckle.
See Color Illustration
Estimate 200/300

1358

1359

Original GENE SIMMONS Personally Owned Belt Worn Offstage and in Photo Shoots
Circa 1990s

A custom 2 inch wide black leather belt covered with rectangular flat studding and a 3 inch western-style chrome buckle.
See Color Illustration
Estimate 200/300

1360
Original GENE SIMMONS KISS Guitar Strap
Used on Various Tours
Circa 1990s

A custom 3 inch wide and 49 inch long black leather guitar strap adorned with "satanic dragon heads," metal rings, round metal studding, diamond-shaped mirrors and black leather tassels.

See Color Illustration
Estimate 400/600



1360

1361
Original GENE SIMMONS Personally-Owned Belt Worn Offstage and in Photo Shoots
Circa 1980s

A custom 3 inch wide black leather belt with 1 inch round silver metal studs with a large 6 inch silver metal buckle with star designs.

See Color Illustration
Estimate 200/300



1361



1362

1362
Original GENE SIMMONS Personally-Owned Belt Worn Offstage and in Photo Shoots
Circa 1990s

A custom black leather 3 inch wide belt with silver stitching adorned with metal "skull" and "snake" and red rhinestone adornments on belt and buckle. A notation of GENE appears on the inside waistband.

See Color Illustration
Estimate 200/300

1363
Original GENE SIMMONS KISS Guitar Strap Used on Various Tours
Circa 1979-1983

A 2 inch wide black leather guitar strap with flat square and pyramid studding measuring 52 inches long.

See Color Illustration
Estimate 400/600



1363

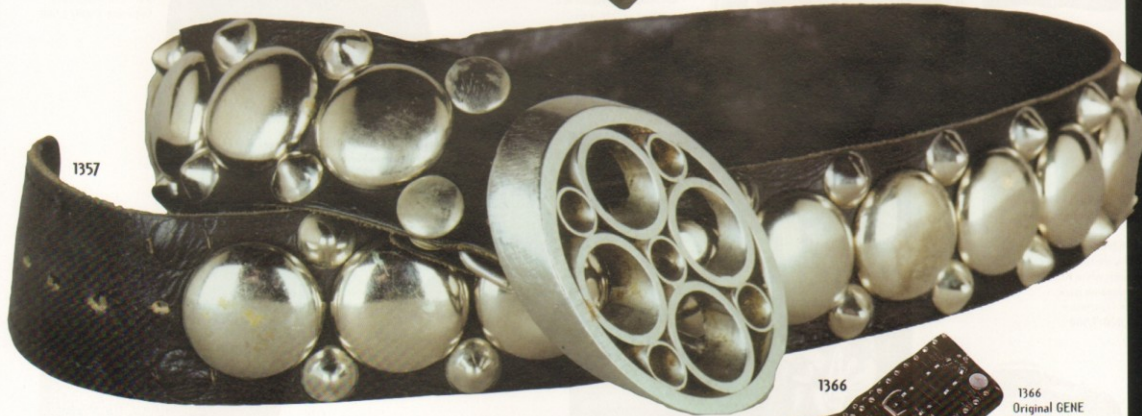
1364
Original GENE SIMMONS KISS Guitar Strap Used on Various Tours
Circa 1979-1983

A 2 inch wide black leather guitar strap with flat square and pyramid studding measuring 52 inches long.

Note: GENE SIMMONS' dried stage blood appears on face of strap.
See Color Illustration
Estimate 500/700



1364



1357

1365
Original GENE SIMMONS KISS Belt Worn on Various Tours
Circa 1980s

A custom 3 inch wide black leather belt accessorized with conchos, metal studs, rings, straps and buckles.

See Color Illustration
Estimate 300/500



1365



1366

1366
Original GENE SIMMONS KISS Costume Belt From Various Tours
Circa 1980s

A 5 inch wide black leather studded belt with straps, metal buckles and rings.

See Color Illustration
Estimate 400/600

1367
Original GENE SIMMONS KISS Costume Wristbands From Various Tours
Circa 1980s

A pair of black leather studded and spiked wristbands with finger holes.

See Color Illustration
Estimate 400/600



1367



1368
Original GENE SIMMONS
Personally Owned Gloves Worn
Offstage and in Photo Shoots
Circa 1990s

A custom pair of black leather
gloves with fringe.
See Color Illustration
Estimate 200/300



1368

1369

1369
Original GENE SIMMONS KISS
Costume Boot Covers from
Various Tours

Circa 1980s
A custom pair of black leather
"pirate" style boot covers with silver
metal studding and metal rings.
See Color Illustration
Estimate 300/500



1371

1371
Original GENE SIMMONS Personally-Owned Cotton
KISS Tour Sweatshirt

Circa 1976-1977
A custom black cotton KISS tour sweatshirt with
KISS WORLD TOUR logo screened on left front.
See Color Illustration
Estimate 300/500



1371



1372

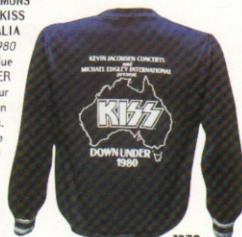
1372
Original GENE SIMMONS
Personally-Owned Cotton
Tour Jacket

Circa 1976
A custom blue cotton
CASABLANCA RECORDS
workout jacket with
embroidered logo on back
and Gene embroidered on
front left side and STARZ
bottlecap pin on front.
See Color Illustration
Estimate 750/1,000

1373



1373



1370

1370
Original GENE SIMMONS
Personally-Owned Cotton KISS
Tour Jacket from AUSTRALIA
1980

A custom midnight blue
cotton KISS DOWNUNDER
1980 baseball style tour
jacket with tour logo on
back.
See Color Illustration
Estimate 750/1,000

1373
Original GENE SIMMONS
Personally-Owned Satin Tour Jacket
Circa 1974

A custom purple satin
ELECTRIC LADY STUDIOS
baseball style tour jacket with
studio logo stitched on back.
See Color Illustration
Estimate 1,500/2,500

1374
Original GENE SIMMONS Personally-
Owned Satin KISS Tour Jacket
Circa 1974

A custom black satin KISS
baseball-style tour jacket
embroidered with white KISS
logo on back.
See Color Illustration
Estimate 1,000/1,500



1374



1375

1375
Original GENE SIMMONS KISS Stage
Shoes Worn on Various Tours

Circa 1980s-1990s
An original pair of customized black
Adidas stage shoes worn by GENE
SIMMONS.
See Color Illustration
Estimate 500/700



1376

1376
Original GENE SIMMONS KISS
Stage Shoes from Various Tours

Circa 1980s-1990s
A pair of customized black Adidas
wrestling style boot with raised
platform sole.
See Color Illustration
Estimate 600/800

1377
Original GENE SIMMONS KISS Stage
Shoes from Various Tours
Circa 1980s-1990s
A pair of customized black Adidas
wrestling style boot with raised platform
sole.
Estimate 600/800

1378
Original GENE SIMMONS
Personally Owned Platform Shoes
Circa 1974

An original pair of multi-layered platform
shoes custom-made of pink leather and
snakeskin worn by Gene Simmons on
and off stage.
Estimate 1,000/1,500



1378

1379
Original GENE SIMMONS
Personally Owned Shoes
1975

An original pair of custom-made
electric blue leather shoes with
wood heels and pointed toes
worn by GS offstage.
See Color Illustration
Estimate 200/300



1379



1380

1380
Original GENE SIMMONS
Personally Owned Shoes
1975

An original pair of custom made
size 10 brown and beige shoes
made by Nunn Bush worn by GS
offstage.
See Color Illustration
Estimate 200/300



1381

1381
Original GENE SIMMONS
Personally Owned Shoes
1975

Original pair of custom made
red leather and snakeskin
shoes with pointed toes and
wood heels worn by GS
offstage.
See Color Illustration
Estimate 300/500



1382
Original GENE SIMMONS Personally Owned Shoes
1975
An original pair of custom made midnight blue suede and snakeskin shoes worn by GS offstage.
See Color Illustration
Estimate 300/500



1382

1383
Original GENE SIMMONS Personally Owned Shoes
1975
An original pair of custom made white leather and snakeskin shoes worn by GS offstage.
See Color Illustration
Estimate 300/500



1383

1384
Original GENE SIMMONS Personally Owned Boots Spurs Worn Offstage
Circa 1980s
A custom pair of stainless steel boot spurs with natural leather straps and buckles.
See Color Illustration
Estimate 300/500



1384

1385
Original GENE SIMMONS Platform Boots Used Offstage
Circa 1970s
A pair of 7 inch black snakeskin leather platform boots worn offstage by GENE SIMMONS.
Note: The design of these boots is the same as SIMMONS' stage boots.
See Color Illustration
Estimate 750/1,000



1385

1386
Original GENE SIMMONS Platform Boots Used Offstage
Circa 1970s
A pair of 7 inch maroon patent leather platform boots worn offstage by GENE SIMMONS.
Note: The design of these boots is the same as SIMMONS' stage boots.
See Color Illustration
Estimate 750/1,000



1386

1387
Original GENE SIMMONS Personally Owned Platform Cowboy Boots
1975
An original pair of size 12 medium brown leather platform cowboy boots worn offstage by GS.
See Color Illustration
Estimate 300/500



1387

1388
Original GENE SIMMONS Personally Owned
Platform Cowboy Boots

1977
An original pair of size 12 medium two-tone brown leather platform cowboy boots worn onstage by GS.
See Color Illustration
Estimate 300/500



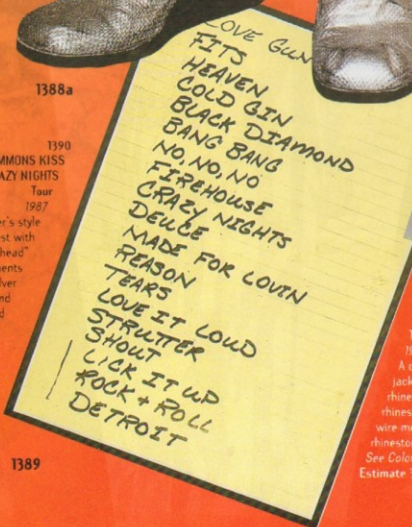
1389
Original GENE SIMMONS Personally Owned KISS Set List
1987
An original nineteen song set list used on stage during the CRAZY NIGHTS Tour.
Matted and Framed
Overall Sizes: 16 inches by 12 inches
See Color Illustration
Estimate 1,500/2,000



1390
Original GENE SIMMONS KISS
Vest from the CRAZY NIGHTS
Tour
1987

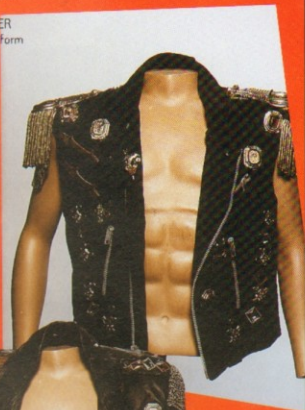
A custom biker's style black cotton vest with "dragon," "skull head" and assorted ornaments on front and silver mesh on back and accessorized epaulets on shoulder.
See Color Illustration
Estimate 1,500/2,500

1389



1388a
Original KISS Stage Shoes Worn by PETER
CRISS From KISS Tours

Circa 1970s
A pair of 2 3/4 inch raised sole silver snakeskin leather stage shoes with black soles and silver laces.
Note: These shoes were worn by PETER CRISS while drumming because platform boots were too difficult to play in.
See Color Illustration
Estimate 1,000/1,500



1390



1391



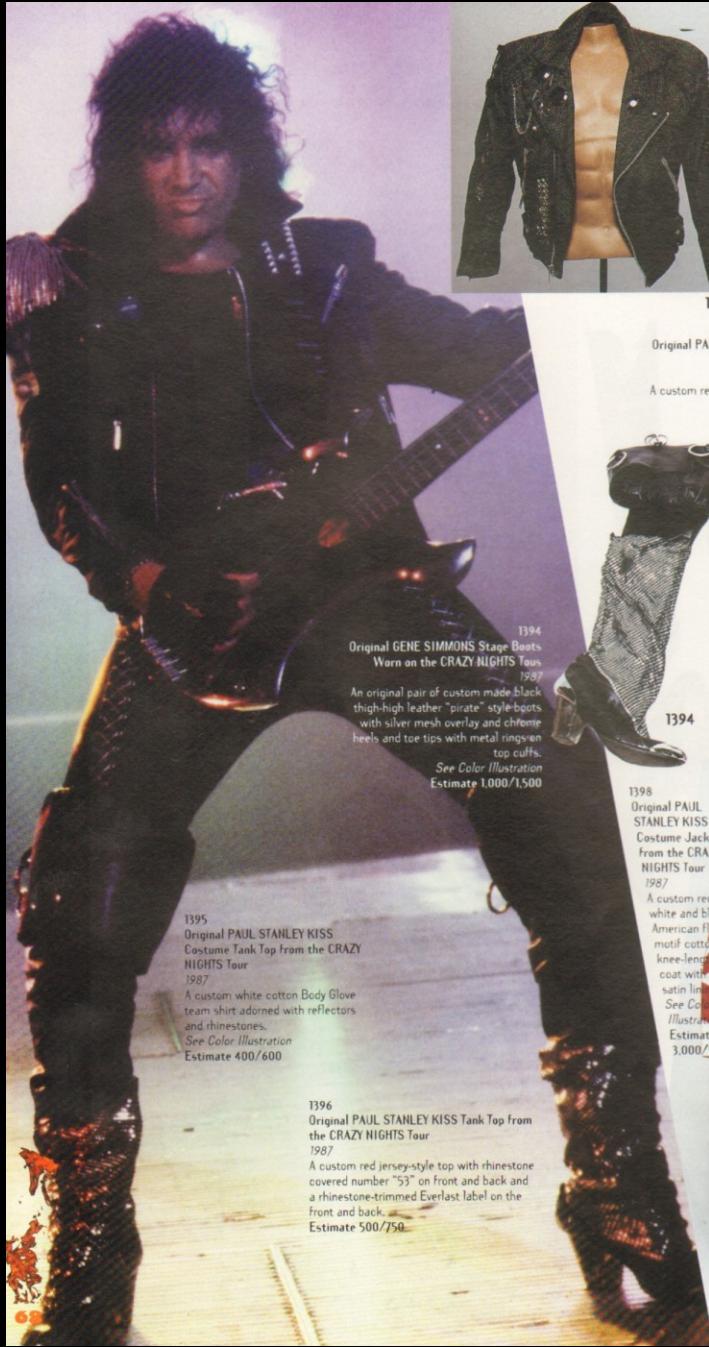
1392

1391
Original GENE SIMMONS KISS
Jacket from the CRAZY NIGHTS
Tour
1987

A custom biker's style black leather jacket with "skull" and chrome, rhinestone adornments on front with rhinestone "diamond" motif down sleeves, wire mesh and large square colored rhinestones on shoulders and back.
See Color Illustration
Estimate 3,000/5,000

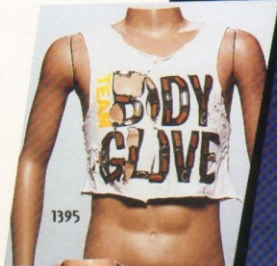
1392
Original GENE SIMMONS KISS Jacket
from the CRAZY NIGHTS Tour
1987

A black faux leather biker's style waist-length jacket with square and rectangular shaped metallic adornments, round metal studding throughout and large silver metal zippers and black leather fringe.
See Color Illustration
Estimate 3,000/5,000



1393

1393
Original GENE SIMMONS KISS
Jacket from the CRAZY NIGHTS
TOUR
1987
A black and silver textured biker's
style custom jacket with large
round chrome and red "diamond"
rhinestone adornments on sleeves
and lapels and on the back a large
emblem reading *Worlds Best Fuck*.
See *Color Illustration*
Estimate 4,000/6,000



1395

1397
Original PAUL STANLEY KISS Costume Jacket from
the CRAZY NIGHTS Tour
1987
A custom red and black flower-patterned sheer
knee-length coat with black velvet lapels.
See *Color Illustration*
Estimate 3,000/5,000



1397

1394
Original GENE SIMMONS Stage Boots
Worn on the CRAZY NIGHTS Tour
1987
An original pair of custom made black
thigh-high leather "pirate" style boots
with silver mesh overlay and chrome
heels and toe tips with metal rings on
top cuffs.
See *Color Illustration*
Estimate 1,000/1,500



1394

1398
Original PAUL
STANLEY KISS
Costume Jacket
from the CRAZY
NIGHTS Tour
1987
A custom red,
white and blue
American flag
motif cotton
knee-length
coat with
satin lining.
See *Color
Illustration*
Estimate
3,000/5,000



1398

1395
Original PAUL STANLEY KISS
Costume Tank Top from the CRAZY
NIGHTS Tour
1987
A custom white cotton Body Glove
team shirt adorned with reflectors
and rhinestones.
See *Color Illustration*
Estimate 400/600

1396
Original PAUL STANLEY KISS Tank Top from
the CRAZY NIGHTS Tour
1987
A custom red jersey-style top with rhinestone
covered number "53" on front and back and
a rhinestone-trimmed Everlast label on the
front and back.
Estimate 500/750



1399
Original PAUL STANLEY KISS Costume
Stage Robe from the CRAZY NIGHTS Tour
1987

A black and gold faux fur/lamé flower
patterned knee-length stage robe with
black velvet lapels and a dark red
patterned lining.
See Color Illustration
Estimate 3,000/4,000



1399



1400



1401

1400
Original PAUL STANLEY KISS Stage Shoes from the
CRAZY NIGHTS Tour
1987

A pair of customized white NIKE stage shoes adorned
with rhinestones with white leather padded leggings
with Velcro straps.
See Color Illustration
Estimate 600/800

1401
Original PAUL STANLEY KISS Stage Shoes from the
CRAZY NIGHTS Tour
1987

A pair of customized white NIKE stage shoes adorned
with rhinestones with white leather padded leggings
with Velcro straps.
See Color Illustration
Estimate 600/800



1402

1402
Original PAUL STANLEY Guitar Used on the
CRAZY NIGHTS Tour
1987

An original BC Rich custom Strat electric guitar
finished in Army green military motif. Serial
number 90561. Comes with original black
hardshell case with KISS inventory barcode.
See Color Illustration
Estimate 5,000/7,000



1403
Original PAUL STANLEY Guitar
Used on the CRAZY NIGHTS Tour
1987

An original BC Rich custom Strat
electric guitar finished in red,
white and blue American flag
motif. Serial number 90611.
Comes with original black
hardshell case with KISS inventory

barcode
See Color Illustration
Estimate 5,000/7,000

1403



1404



1406

1404
Original PAUL STANLEY KISS
Guitar Used on the CRAZY NIGHTS
Tour
1987

An original custom BC Rich
handmade double-neck Strat
electric guitar finished in crme
with white pickguard and metal
plate adornments. Serial number
B4809 B0246. Comes with
original black hardshell case with
KISS inventory barcode.
See Color Illustration
Estimate 5,000/7,000

1405



1407

1406
Original KISS Costume Jersey
Worn by BRUCE KULICK from the
CRAZY NIGHTS Tour
1987

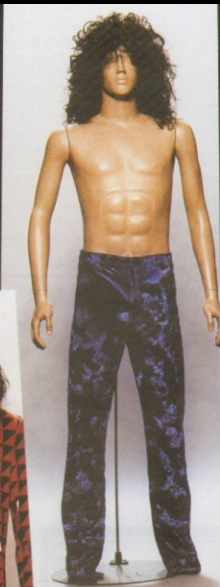
A custom red cotton jersey-style
shirt with a gold and black BK
diamond insignia on front outlined
with small rhinestones.
See Color Illustration
Estimate 500/700

1405
Original KISS Electronic
Drum Pads Used by
ERIC CARR on the
CRAZY NIGHTS Tour
1987

A set of eight original
Simmons white drum
pads outlined with glow
in the dark tape used
primarily as a feature
during ERIC CARR's
drum solo.

Each Pad: 12 inches by
12 inches 3 inches
See Color Illustration
Estimate 500/700

1407
Original KISS Jacket Worn By BRUCE KULICK
From the CRAZY NIGHTS Tour
1987
An iridescent green biker's style custom jacket.
See Color Illustration
Estimate 1,500/2,000



1408
Original KISS Pants Worn
By BRUCE KULICK From the
CRAZY NIGHTS Tour
1987
A custom purple-yellow patterned
pair of pants.
See Color Illustration
Estimate 300/400

1409
Original KISS Jacket and Pants Worn
By BRUCE KULICK from the CRAZY
NIGHTS Tour
1987
A custom red, black and white patterned
suit including jacket and pants.
See Color Illustration
Estimate 1,000/1,500



1410
Original GENE SIMMONS Personally
Owned Script for KISS MEETS THE
PHANTOM
1978
An original final draft script dated 3/
16/78 of the Hanna Barbera Production
KISS MEETS THE PHANTOM. This script
includes handwritten notes on first
page by GS.
See Color Illustration
Estimate 300/500

1408

1410

1409

1411
Original GENE SIMMONS Personally Owned Script for KISS
MEETS THE PHANTOM
1978
An original final draft script dated 3/16/78 of the Hanna
Barbera Production KISS MEETS THE PHANTOM.
Estimate 300/500

1413
Original GENE SIMMONS Personally Owned KISS
MEETS THE PHANTOM OF THE PARK Script
1978
An original first draft version of the film with
handwritten in ink pen notes on cover and
throughout the book.
See Color Illustration
Estimate 300/500

1413

1412
Original GENE SIMMONS Personally Owned
KISS MEETS THE PHANTOM OF THE PARK
Information Binder
1978
An original information and script binder
that includes cast lists, shooting
schedule, general information and
script used by GS on the set of the
movie.
See Color Illustration
Estimate 300/500

1412

1414
 Original GENE SIMMONS
 Personally Owned KISS Movie Premiere Invitations
 1978

An original pair of invitations to the screening of KISS MEETS THE PHANTOM OF THE PARK movie, with one at the Director's Guild in Hollywood on October 24, 1978 and the other at John Jay College in New York City on October 25, 1978.

Matted and Framed

Overall Size: 14 inches by 17 inches

See Color Illustration

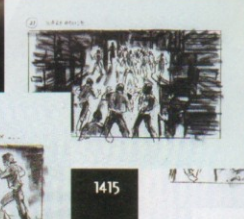
Estimate 300/400



1414



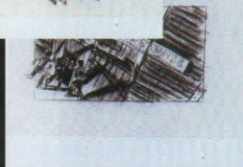
1415



1415



1415



1415



1415



1415



1415



1415



1415

1415
 Original GENE SIMMONS Personally Owned
 Storyboard Sketches from the KISS MEETS THE
 PHANTOM OF THE PARK Movie
 1978

A group of ten original pencil and charcoal on union skin "action sequence" drawings used as storyboards for the made-for-television movie.

Matted and Framed

Overall Size: 43 inches by 29 inches

See Color Illustration

Estimate 2,000/3,000



1416

Original GENE SIMMONS Personally Owned Storyboard Sketches from the KISS MEETS THE PHANTOM OF THE PARK Movie 1978

An original pencil and charcoal on onion skin drawing of KISS "on stage" used as a storyboard for the made-for-television movie.

(Matted and Framed)
Overall Size: 12 inches by 16 1/2 inches
See Color Illustration
Estimate 400/600



1420

1422 Original GENE SIMMONS Personally Owned Storyboard Sketches from the KISS MEETS THE PHANTOM OF THE PARK Movie 1978

An original pencil and charcoal on onion skin drawing of GENE SIMMONS "on stage" used as a storyboard for the made-for-television movie.

(Matted and Framed)
Overall Size: 16 inches by 19 inches
See Color Illustration
Estimate 400/600



THE NEW YORK TIMES, ENGLISH, IN LONDON, AND OTHER COUNTRIES
JAMES JONES, INC. THE NEW YORK

1422

1416 Original GENE SIMMONS Personally Owned Storyboard Sketches from the KISS MEETS THE PHANTOM OF THE PARK Movie

1978 An original pencil and charcoal on onion skin drawing of PETER CRISS used as a storyboard for the made-for-television movie.

(Matted and Framed)
Overall Size: 16 inches by 12 inches
See Color Illustration
Estimate 300/500



1417

1420 Original GENE SIMMONS Personally Owned Storyboard Sketches from the KISS MEETS THE PHANTOM OF THE PARK Movie

1978 A pair of original pencil and charcoal on onion skin drawings of "KISS concert" used as storyboards for the made-for-television movie.

(Matted and Framed)
Overall Size: 18 1/2 inches by 16 inches
See Color Illustration
Estimate 600/900



1423 Original GENE SIMMONS Personally Owned Storyboard Sketches from the KISS MEETS THE PHANTOM OF THE PARK Movie 1978

A pair of original pencil and charcoal on onion skin drawings of KISS "on stage" used as storyboards for the made-for-television movie.

(Matted and Framed)
Overall Size: 19 inches by 16 inches
See Color Illustration
Estimate 400/600



1418

1418 Original GENE SIMMONS Personally Owned Storyboard Sketches from the KISS MEETS THE PHANTOM OF THE PARK Movie

1978 An original pencil and charcoal on onion skin drawing of KISS "four heads" used as a storyboard for the made-for-television movie.

(Matted and Framed)
Overall Size: 12 inches by 15 1/2 inches
See Color Illustration
Estimate 400/600



THE NEW YORK TIMES, ENGLISH, IN LONDON, AND OTHER COUNTRIES



1419

Original GENE SIMMONS Personally Owned Storyboard Sketches from the KISS MEETS THE PHANTOM OF THE PARK Movie

1978 A pair of original pencil and charcoal on onion skin drawings of "concert crowd" used as storyboards for the made-for-television movie.

(Matted and Framed)
Overall Size: 19 inches by 16 inches
See Color Illustration
Estimate 400/600



1421

1421 Original GENE SIMMONS Personally Owned Storyboard Sketches from the KISS MEETS THE PHANTOM OF THE PARK Movie

1978 An original pencil and charcoal on onion skin drawing of ACE FREHLEY "on a volcano" used as a storyboard for the made-for-television movie.

(Matted and Framed)
Overall Size: 12 inches by 16 inches
See Color Illustration
Estimate 300/500



1423

1424 Original GENE SIMMONS Personally Owned Storyboard Sketches from the KISS MEETS THE PHANTOM OF THE PARK Movie

1978 A pair of original pencil and charcoal on onion skin drawings of PETER CRISS "flying through air" used as storyboards for the made-for-television movie.

(Matted and Framed)
Overall Size: 19 inches by 16 inches
See Color Illustration
Estimate 600/900



1424



1425
Original GENE SIMMONS Personally Owned Storyboard Sketches from the KISS MEETS THE PHANTOM OF THE PARK Movie
1978

A pair of original pencil and charcoal on onion skin drawings of "monolith explodes" and PETER CRISS "springs forth" used as storyboards for the made-for-television movie.

(Matted and Framed)
Overall Size: 19 inches by 16 inches
See Color Illustration
Estimate 300/500



1427



1427



1428

1428
Original GENE SIMMONS Personally Owned Storyboard Sketches from the KISS MEETS THE PHANTOM OF THE PARK Movie
1978

An original pencil and charcoal on onion skin drawing of "Abner's Workshop" used as a storyboard for the made-for-television movie.

(Matted and Framed)
Overall Size: 21 1/2 inches by 25 inches
See Color Illustration
Estimate 500/700



1429

1429
Original GENE SIMMONS Personally Owned Storyboard Sketches from the KISS MEETS THE PHANTOM OF THE PARK Movie
1978

An original pencil and charcoal on onion skin drawing of "Abner's Workshop" used as a storyboard for the made-for-television movie.

(Matted and Framed)
Overall Size: 26 inches by 34 inches
See Color Illustration
Estimate 200/300

1425

1426
Original GENE SIMMONS Personally Owned Storyboard Sketches from the KISS MEETS THE PHANTOM OF THE PARK Movie
1978

A pair of original pencil and charcoal on onion skin drawings of "ACE FREHLEY 'lightning strikes monolith'" and "ACE turns towards monster" used as storyboards for the made-for-television movie.

(Matted and Framed)
Overall Size: 19 inches by 16 inches
See Color Illustration
Estimate 600/900



1426

1427
Original GENE SIMMONS Personally Owned Storyboard Sketches from the KISS MEETS THE PHANTOM OF THE PARK Movie
1978

A set of three original pencil and charcoal on onion skin drawings of "amusement park" used as storyboards for the made-for-television movie.

(Matted and Framed)
Overall Size: 28 inches by 17 inches
See Color Illustration
Estimate 700/1000



1427



1430



1430



1430



1430

1430
Original GENE SIMMONS Personally Owned Storyboard Sketches from the KISS MEETS THE PHANTOM OF THE PARK Movie
1978

A group of ten original pencil and charcoal on onion skin "faction sequence" drawings used as storyboards for the made-for-television movie.

(Matted and Framed)
Overall Size: 43 inches by 29 inches
See Color Illustration
Estimate 2,000/3,000

1430



1430



1430



1430



1430





1431



1431



1431



1431



1431



1431



1431



1431



1431



1432



1432



1432



1432



1432



1433

1432 Original GENE SIMMONS Personally Owned Storyboard Sketches from the KISS MEETS THE PHANTOM OF THE PARK Movie

1978

A group of ten original pencil and charcoal on union skin "action sequence" drawings used as storyboards for the made-for-television movie.

(Matted and Framed)
Overall Size: 43 inches by 29 inches
See Color Illustration

1432



1432



1432



1432

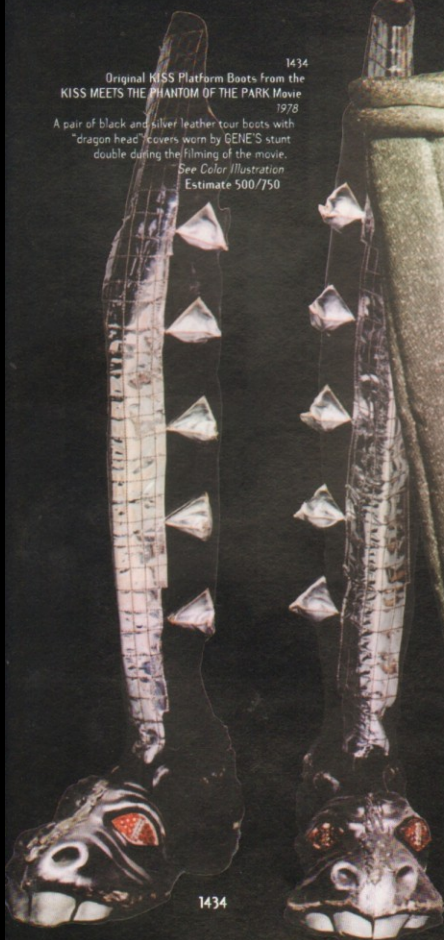
1433 Original GENE SIMMONS Personally Owned Drawing/Artpiece 1978

An original pastel on paper drawing used as a storyboard for the KISS MEETS THE PHANTOM OF THE PARK movie showing GENE SIMMONS flying through the air surrounded by a fireworks display.

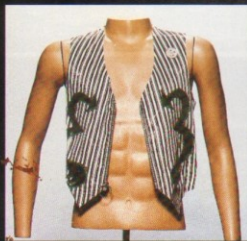
(Matted and Framed)
Overall Size: 20 inches by 26 1/2 inches
See Color Illustration
Estimate 300/500

1434
Original KISS Platform Boots from the
KISS MEETS THE PHANTOM OF THE PARK Movie
1978

A pair of black and silver leather tour boots with
"dragon head" covers worn by GENE'S stunt
double during the filming of the movie.
See Color Illustration
Estimate 500/750



1434



1438
Original KISS Vest Worn By PETER CRISS from the KISS MEETS THE PHANTOM OF THE PARK Movie
1978

A black and white striped satin vest with a metal zipper and three green "3" green lamé appliques stitched to
both the front and back areas. Also included is an original "Pete and Lydia Good Luck" button from their
wedding that took place on July 13, 1966 stitched to the front.

See Color Illustration
Estimate 2,000/3,000

1435
Original KISS Boot from the
KISS MEETS THE PHANTOM OF THE PARK Movie
1978

A silver lamé covered leather platform boot worn by
ACE FRENHLEY's stunt double during the filming of
the movie.

See Color Illustration
Estimate 3,000/5,000



1436
Original PAUL STANLEY KISS Costume from the
KISS MEETS THE PHANTOM OF THE PARK Era
1978

A black unitard bodysuit with multicolored and multi-sized
studding covering the sleeves and red trim around oval leg
cut-outs along with a matching padded breast and shoulder
piece with attached studded cuppiece and chain accessory.

Note: This prototype costume was never used on stage as
a more dramatic one was used instead.

Estimate 5,000/7,500

1437
Original PAUL STANLEY KISS Bodysuit from the KISS
MEETS THE PHANTOM OF THE PARK Era
1978

A black unitard bodysuit with silver lamé and
rhinestone stars sewn down either leg with a
matching trim around the neck and arms.

See Color Illustration
Estimate 3,000/5,000





1439
Original KISS Vest Worn By PETER CRISS from the KISS
MEETS THE PHANTOM OF THE PARK Movie
1978
A black and white striped satin vest with a metal zipper and
three number "3" green lamé appliques stitched to both the
front and back areas.
Estimate 2,000/3,000

1440
Original KISS Vest Worn By PETER CRISS from the KISS
MEETS THE PHANTOM OF THE PARK Movie
1978
A black and white striped satin vest with a metal zipper and
three number "3" green lamé appliques stitched to both the
front and back areas.
Estimate 2,000/3,000

1441
Set of Four Original KISS Robes from the
KISS MEETS THE PHANTOM OF THE PARK Movie
1978

A group of four silver and black lamé hooded robes worn by PAUL, ACE, GENE
and PETER during the filming of their first made-for-television movie. All pieces
have interior labels denoting the band member's names.
See Color Illustration
Estimate 10,000/15,000



1441

KISS



1441A



See Color Illustration
Estimate 10,000/15,000

1441A
Complete Set of Four Original KISS Costumes on KISS
Mannequins from the PSYCHO CIRCUS Tour
1998-1999

A set of four custom-made life-size mannequins depicting GENE SIMMONS, PAUL STANLEY, ACE FREHLEY and PETER CRISS in Full KISS makeup and complete costumes. SIMMONS' costume consists of a black unitard bodysuit silver spiked upper body armor complete with shoulder and arm pieces, a black leather studded crotch piece belt and a pair of 7 inch silver and black leather "dragon" platform boots with scarpie uspers. STANLEY'S costume consists of a black spandex with rhinestone and studded "vein" design with matching spandex long-sleeved top custom studded black leather "prize fighter" belt with star design on front, black leather studded neck collar and a pair of 7 inch black and silver leather platform boots with rhinestone and studded "vein" designs. FREHLEY'S costume consists of a black unitard bodysuit with rhinestones throughout, a silver and black lamé "space" vest with silver "tubing" shoulder designs complete with rhinestone "meteor" designs on front and back, with matching 12 inch silver and black lamé arm bands, and a pair of 6 inch silver lamé covered leather platform "space" boots. CRISS' costume consists of a black unitard bodysuit with silver lamé and rhinestone studded "feline" design on shoulder and breast with matching rhinestone and studded armbands, a 4 inch wide rhinestone and studded black leather belt, and a pair of 6 inch silver and black snakeskin leather platform boots.

Note: These mannequins were on display at the "Rock Style Exhibition" at the Metropolitan Museum of Art in New York City during the first half of 2000 and will continue on to others exhibitions around the world. Available for delivery in January 2001.

See Color Illustration
Estimate 100,000/150,000

End of Session I

1441A

1441A

1441A





SESSION 2
SUNDAY, JUNE 25, 2000
at 1pm

LOTS 1442-1848

HERE COME THE JUDGE
Judge in a red and blue
judge
OF
COP
Judge in a red and blue
judge

THE JUDGE
Judge in a red and blue
judge
OF
COP
Judge in a red and blue
judge

1442
Original GENE SIMMONS Handwritten
Storyline and Notes for THE ELDER
1987
An original document handwritten in ink
pen on Beverly Hills Hotel and Dunelows
letterhead denoting storyline and
notations for THE ELDER LP.
Framed in Two-Sided Plexiglass with Base
Overall Size: 10 inches by 13 inches
See Color Illustration
Estimate 1,500/2,000

1442

1443
Original GENE SIMMONS Handwritten
Storyline and Notes for THE ELDER
1987
An original document handwritten in ink
pen denoting storyline and notations for THE
ELDER LP.
Framed in Two-Sided Plexiglass with Base
Overall Size: 11 inches by 14 inches
See Color Illustration
Estimate 1,500/2,000

1443
Original GENE SIMMONS Handwritten
Storyline and Notes for THE ELDER
1987
An original document handwritten in ink
pen denoting storyline and notations for THE
ELDER LP.
Framed in Two-Sided Plexiglass with Base
Overall Size: 11 inches by 14 inches
See Color Illustration
Estimate 1,500/2,000

THE ELDER

1442
Original GENE SIMMONS Handwritten
Storyline and Notes for THE ELDER
1987
An original document handwritten in ink
pen on Beverly Hills Hotel and Dunelows
letterhead denoting storyline and
notations for THE ELDER LP.
Framed in Two-Sided Plexiglass with Base
Overall Size: 10 inches by 13 inches
See Color Illustration
Estimate 1,500/2,000

1444
Original GENE SIMMONS
Handwritten Storyline and
Notes for THE ELDER
1987
An original ten page
document handwritten in ink
pen denoting storyline and
notations for THE ELDER LP.
Framed in Two-Sided
Plexiglass with Base
Overall Size: 20 inches by 32
inches
See Color Illustration
Estimate 5,000/7,000

1444
Original GENE SIMMONS
Handwritten Storyline and
Notes for THE ELDER
1987
An original ten page
document handwritten in ink
pen denoting storyline and
notations for THE ELDER LP.
Framed in Two-Sided
Plexiglass with Base
Overall Size: 20 inches by 32
inches
See Color Illustration
Estimate 5,000/7,000

1444
Original GENE SIMMONS
Handwritten Storyline and
Notes for THE ELDER
1987
An original ten page
document handwritten in ink
pen denoting storyline and
notations for THE ELDER LP.
Framed in Two-Sided
Plexiglass with Base
Overall Size: 20 inches by 32
inches
See Color Illustration
Estimate 5,000/7,000

1444
Original GENE SIMMONS
Handwritten Storyline and
Notes for THE ELDER
1987
An original ten page
document handwritten in ink
pen denoting storyline and
notations for THE ELDER LP.
Framed in Two-Sided
Plexiglass with Base
Overall Size: 20 inches by 32
inches
See Color Illustration
Estimate 5,000/7,000

1444
Original GENE SIMMONS
Handwritten Storyline and
Notes for THE ELDER
1987
An original ten page
document handwritten in ink
pen denoting storyline and
notations for THE ELDER LP.
Framed in Two-Sided
Plexiglass with Base
Overall Size: 20 inches by 32
inches
See Color Illustration
Estimate 5,000/7,000

1444
Original GENE SIMMONS
Handwritten Storyline and
Notes for THE ELDER
1987
An original ten page
document handwritten in ink
pen denoting storyline and
notations for THE ELDER LP.
Framed in Two-Sided
Plexiglass with Base
Overall Size: 20 inches by 32
inches
See Color Illustration
Estimate 5,000/7,000

1451
Original PAUL STANLEY
KISS Stage Boots
from the ELDER Era
1981
A pair of black patent
leather thigh-high
"pirate style" boots
worn by PAUL for
promotional and
television appearances.
See Color Illustration
Estimate 2,000/2,500



1452
Original PAUL
STANLEY KISS Belt
from the ELDER Era
1981
A 3 inch black patent
leather belt adorned
with leather straps,
metal rings and
chains.
See Color Illustration
Estimate 400/600



1450
Original PAUL STANLEY KISS
Costume from the ELDER Tour
1981
A pair of black Lycra pants and a
matching top with billowed
sleeves, a black patent leather
belt accessorized with straps,
metal rings and chains, a set of
silver leather wrist cuffs and a
pair of matching patent leather
boots with straps and buckles.
See Color Illustration
Estimate 5,000/7,000



1449

1449
Original GENE
SIMMONS KISS
Costume from THE
ELDER/CREATIVES OF
THE NIGHT Tour/Era
1981/1983
A black unitard bodysuit
with black leather and
medieval-style spiked
shoulder pieces and
silver braided arm
patches further
accessorized by leather
straps, metal buckles
and rings.
See Color Illustration
Estimate 4,000/6,000



1450





1453
Original KISS Bodysuit
Worn by ACE FREHLEY
from THE ELDER/
CREATURES OF THE
NIGHT Tour/Era
1981-1983
A black unitard
bodysuit adorned with
rhinestones and a
silver lamé lightning
bolt motif on the chest
and sleeves.
See Color Illustration
Estimate 3,000/5,000



1453



1454
Original KISS Costume
Worn by ERIC CARR
from THE ELDER Era
1981

A black unitard bodysuit
adorned with silver
metal zippers with
matching zipped belt,
collar and armbands.
See Color Illustration
Belt and armbands are
not in photograph
Estimate 3,000/5,000

1454



1455
Original KISS
Costume Worn by
ERIC CARR from
THE ELDER Era
1981

A black unitard
bodysuit adorned
with silver metal
zippers and a
matching
zipped collar.
See Color
Illustration for
Previous Lot
Number
Estimate 3,000/
5,000

1455



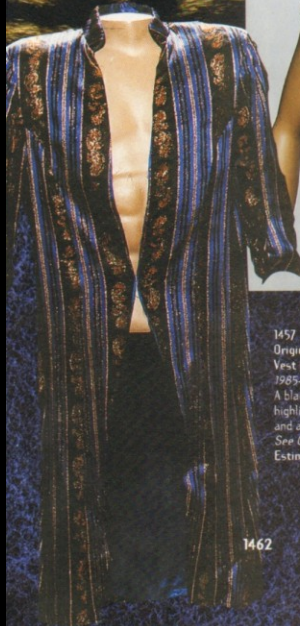
1456
Original GENE SIMMONS
KISS Costume from the
ASYLUM Tour
1985-1986

A custom black one-piece
unitard with gold lamé trim
and designs, around leg cut-
outs with a matching black
and red satin jacket with gold
lamé trim and shoulder and
sleeve designs with round
mirror adornments and a red
beaded and sequined shirt.
Also included is a sheer black
scarf.

See Color Illustration
Estimate 5,000/7,000

1456





1462

1457
Original GENE SIMMONS KISS
Vest from the ASYLUM Tour
1985-1986
A black sequined vest
highlighted with white stitching
and a red satin lining.
See Color Illustration.
Estimate 750/1,000

1463

1463
Original GENE SIMMONS
KISS Costume Jacket
from the ASYLUM Tour
1985-1986
A black and blue patterned
sheer knee-length jacket
with black and blue
rhinestones throughout and
snaps around the arm holes
and a black patterned
lining.
See Color Illustration.
Estimate 3,000/5,000



1462
Original GENE SIMMONS
KISS Costume Coat from
the ASYLUM Tour
1985-1986
A custom black satin jacket
with gold and purple stripes
and paisley-like designs on
the surface and a royal blue
lining.
See Color Illustration.
Estimate 2,000/2,500





1465

1465
Original GENE SIMMONS KISS
Costume from the ASYLUM
Tour
1985-1986
A custom black spandex and
cotton bodysuit unitard covered
with red and black rhinestones
adorned with a black fabric
mesh, spandex lacing and red
piping along pant legs with
zippered pant bottoms.
See Color Illustration
Estimate 3,000/5,000

1464
Original GENE SIMMONS KISS
Costume from the ASYLUM Tour
1985-1986
A custom black and red-spandex pair
of pants with suspenders covered
with white, red and black rhinestones.
Estimate 2,000/3,000



1467
Original PAUL STANLEY KISS
Costume Piece from the ASYLUM
Tour
1985-1986
A custom multi-colored beaded
suspender-like costume with
rhinestone-decorated epaulettes and
attached belt.
See Color Illustration
Estimate 500/700



1468

1468
Original PAUL STANLEY KISS Cape from
the ASYLUM Tour
1985-1986
A custom iridescent green and gold rose
print lame cape with a gold and black
ornate style trim with a "court jester" style
back collar flap overlay with attached 6
inch gold tassels and a black sheer lining.
See Color Illustration
Estimate 3,000/4,000

1466
Original PAUL STANLEY KISS Costume
from the ASYLUM Tour
1985-1986
A custom multi-colored spandex pair of
pants with suspenders, accented with
black fringe and covered in multi-colored
rhinestones throughout, complete with
matching leg spats and multi-colored
kneepads.
See Color Illustration
Estimate 2,500/3,500

1469
Original PAUL STANLEY KISS
Costume Jacket from the
ASYLUM Tour
1985-1986
A custom electric pink knee-
length coat adorned with green,
purple, yellow and clear
rhinestones with multi-colored
beaded designs throughout.
Estimate 4,000/6,000

1470

1470
Original PAUL STANLEY KISS Costume
Jacket from the ASYLUM Tour
1985-1986
A custom orange satin jacket with
silver, gold, red, orange, pink and purple
sequined patterns concentrated over
shoulders and rest of entire jacket with
gold and silver tassels and beads strung
from shoulders and a pink and silver
patterned lining.
See Color Illustration
Estimate 2,000/3,000

ASYLUM



TOUR



1471
Original PAUL STANLEY
KISS Costume Pants
from the ASYLUM Tour
1985-1986
A custom black spandex
pants with pink, orange,
green and lavender
rhinestone stripes with
matching like-colored
fabric fringe along legs.
See Color Illustration
Estimate 1,000/1,500



1472
Original PAUL STANLEY
KISS Costume Pants from
the ASYLUM Tour
1985-1986
A custom pair of black
spandex pants with
suspenders designed with
hot pink, yellow and
turquoise designs and
matching cloth fringe
covered with multi-colored
rhinestones and a gold
metal mesh adornment on
front.
See Color Illustration
Estimate 1,000/1,500

1473
Original PAUL STANLEY
KISS Costume from
the ASYLUM Tour
1985-1986
A custom black
spandex pants with
suspenders
accessorized with
multi-colored tassels,
painted designs and
rhinestones.
See Color Illustration
Estimate 2,000/3,000



1473

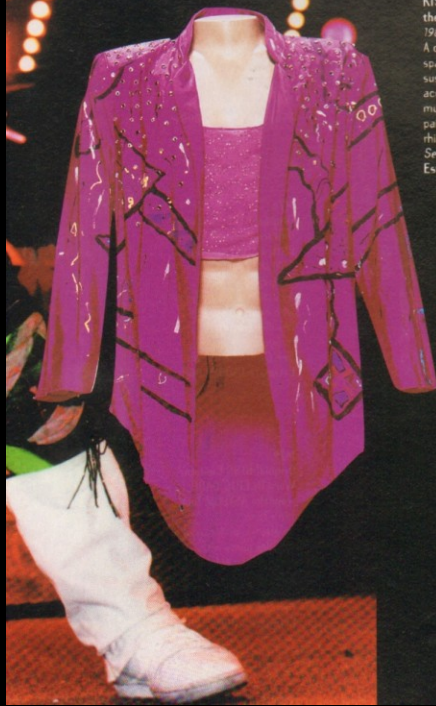
1474
Original PAUL
STANLEY KISS
Costume from the
ASYLUM Tour
1985-1986
A custom pair of
black textured
spandex pants with
suspenders adorned
with rhinestones and
gauze-like lavender
and black fringe
decorated with silver
glitter throughout.
See Color Illustration
Estimate 2,000/
3,000



1474

1475

1475
Original KISS Costume Coat and Tank
Top Worn by ERIC CARR From the
ASYLUM Tour
1985-1986
A custom electric pink light jacket
adorned with white, pink and black
rhinestones over the shoulder and chest
area with black, orange, yellow and blue
painted designs throughout together with
a pink crop tank top.
See Color Illustration
Estimate 2,500/3,500



1476

1476
Original KISS Costume
Unitard Bodysuit Worn
by ERIC CARR From the
ASYLUM Tour
1985-1986
A custom gray, black and
white camouflage
bodysuit.
See Color Illustration
Estimate 1,500/2,000





1477

1478

1479

1480

1481
Original KISS Costume
Worn by BRUCE KULICK
from the ASYLUM Tour
1985-1986

A custom purple velour
jacket with tails with a
gold and orange striped
lame lining with gold
"lion" buttons and purple
strap adornments on the
side and a red cotton
shirt adorned with a red
minestrone sash in
the back.

See Color Illustration
Estimate 2,000/3,000

1481

1477
Original KISS Costume
Unitard Bodysuit Worn
by ERIC CARR from the
ASYLUM Tour
1985-1986

A custom gray, black
and white camouflage
bodysuit.

See Color Illustration
Estimate 1,500/2,000

1478
Original KISS Costume
Unitard Bodysuit Worn
by ERIC CARR from the
ASYLUM Tour
1985-1986

A custom black bodysuit
with multi-colored
designs painted
throughout.

See Color Illustration
Estimate 1,500/2,000

1479
Original KISS Costume
Worn By ERIC CARR
from the ASYLUM Tour
1985-1986

An electric pink pair of
spandex pants with
matching jacket with
pink rhinestones on
shoulder and lapels.

See Color Illustration
Estimate 3,000/5,000



1487
Original GENE
SIMMONS KISS Vest
from the
ANIMALIZE Tour
1984-1985
A custom black and
red leather vest with
black and silver
metal round, triangle
and star studding
throughout with
leather lace-up
stitching on
back. See Color
Illustration
Estimate 2,000/
3,000

1487

1486
Original GENE
SIMMONS KISS Vest
from the ANIMALIZE/
ASYLUM Tours
1984-1986

A custom biker's style
black and red leather
vest with round silver
metal and rhinestone
studding throughout
with red leather animal
print adornment on
back with fringed
bottom hem.
See Color Illustration
Estimate 2,000/3,000

1486



1485
Original GENE
SIMMONS KISS
Vest from the
ANIMALIZE Tour
1984-1985

A custom zebra hide
vest with black
leather lining and
red leather collar
and eyelets and
leather lacing on
shoulder.
See Color
Illustration
Estimate 2,000/
3,000

1485



1482
Original KISS Poster Design
Layout
1984

An original poster layout for the
KISS ANIMALIZE album used for
positioning purposes with crop
marks and other notations.
Matted and Framed
36 inches by 28 inches
See Color Illustration
Estimate 400/600

1482



1483

1483
Original KISS Band Portrait
from the ANIMALIZE Era
1984

An original retouched color
photograph featuring GENE
SIMMONS, ERIC CARR, PAUL
STANLEY and MARK ST.
JOHN, used in the album
package and for other
promotional applications.
Matted and Framed
Overall Size: 24 inches by 30
inches
See Color Illustration
Estimate 400/600

1484
Original GENE SIMMONS
KISS Costume Shin
Guards from the
ANIMALIZE Tour
1984-1986

A pair of custom black and
silver shin guards
accessorized with a patch
of animal hair.
See Color Illustration
Estimate 500/750

1484





1493

1492



1491



1488

1490

1488
Original PAUL STANLEY KISS Vest from the ANIMALIZE Tour
1984-1985
A custom faux leopard print vest with brown leather lining and brown leather studded armbands with chain attachments to vest.
See Color Illustration
Estimate 1,500/2,500

1489
Original PAUL STANLEY KISS Guitar Used on the ANIMALIZE Tour
1984-1985
An original Hunter custom Flying V electric guitar finished in black with yellow and black tiger striping. No serial number. Comes with original white hardshell case with KISS inventory barcode.
See Color Illustration
Estimate 5,000/7,000

1490
Original KISS Flight Case Used by ERIC CARR on the ANIMALIZE Tour
1984
An original black drum case filled with drum stands used to transport ERIC CARRS drums with a KISS logo stencilled to the front, back and top and the ANIMALIZE logo stencilled to the front.
32 inches by 52 inches by 31 inches
See Color Illustration
Estimate 1,000/1,500

1491
Original KISS Vest Worn by BRUCE KULICK from the ANIMALIZE Tour
1984-1985
A black cotton and faux leather vest with mesh and black burlap fringe and texturing and faux giraffe skin lapels and shoulder epaulets, black snake designs, with black and silver metal studding throughout.
See Color Illustration
Estimate 1,500/2,000

1492
Original KISS Vest Worn by BRUCE KULICK from the ANIMALIZE Tour
1984-1985
A custom black faux leather vest with black mesh adornment on shoulders and front with round metal studs throughout and a animal fur patch on right side front.
See Color Illustration
Estimate 1,500/2,000

1493
Original KISS Vest Worn by BRUCE KULICK from the ANIMALIZE Tour
1984-1985
A black faux suede vest with animal skin adornment on right shoulder and metal studs, leather fringe and snake motifs throughout.
See Color Illustration
Estimate 1,500/2,000

1494
Original GENE SIMMONS Personal Owned Magazines and Tour Flyers Featuring KISS
1997-1998
An original box containing approximately 200 KISS tour flyers, four copies of TV Guide Magazine with KISS article from October 17, 1998, ten copies of Collecting Figures Magazine, May 1997 and thirty copies of LF Magazine (Japan) from August 1997 all featuring articles on KISS.
Various Sizes
Estimate 500/750



1489

1495

1495
Original GENE SIMMONS Personally Owned KISS Backstage Access Only Sign
1999

An original foamcore KISS backstage access only sign used during the filming of DETROIT ROCK CITY.
Matted and Framed
Sign Size: 31 inches by 16 inches
Overall Size: 24 inches by 39 inches
See Color Illustration
Estimate 200/300

1496
Original GENE SIMMONS Personally Owned Advertisement Proof
1999

An original color proof/matchprint of KISS "Got Milk?" national print campaign featuring a color portrait of the band by famed photographer Annie Leibowitz.
Matted and Framed
Overall Size: 29 inches by 19 inches
See Color Illustration
Estimate 600/800

1497
Original GENE SIMMONS/PAUL STANLEY Personally Owned KISSSTORY Dummy Book
1994

An original dummy book for the KISS coffee table book KISSSTORY. This nine pound bound book with blank pages was used as a specification guide when producing KISSSTORY. Some handwritten in ink pen notations by GENE SIMMONS appear on the front covers.
14 inches by 11 inches by 7 inches
Estimate 600/800

1498
Original GENE SIMMONS Personally Owned Life Mask
1990

An original black latex life mask made by movie special effects king Rick Baker for GENE SIMMONS' appearance in the "Rock Against Drugs" television advertisement.
See Color Illustration
Estimate 2,000/3,000

1499
Original GENE SIMMONS Personally Owned Simmons Records Mini Guitar Display
1989

An original faux black leather display box with glass top with a white mini guitar that was presented to GENE SIMMONS as a gift in celebration of his new record label, SIMMONS RECORDS.
See Color Illustration
Estimate 400/600

1500
Original GENE SIMMONS Personally Owned KISS Billboard Magazine Issues
1989

A collection of approximately 125 Billboard Music Trade Magazines featuring KISS on the cover dated January 21, 1989.
Estimate 600/900

1501
Original GENE SIMMONS Personally Owned Certification Document
1984

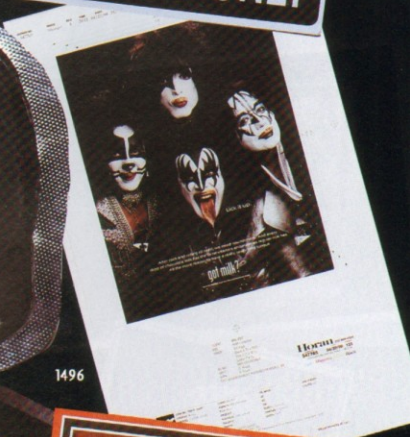
An original document certifying that GENE SIMMONS is a "subject of biographical record in WHO'S WHO IN AMERICA Forty-Third Edition 1984/1985."
Matted and Framed
Overall Size: 15 inches by 17 inches
See Color Illustration
Estimate 400/600

1502
Original KISS Tour Book Cover Artwork for the 10th ANNIVERSARY Tour
Circa 1982/1983

An original negative chrome for the KISS 10th ANNIVERSARY tour book cover featuring the "sink and turret" image.
Matted and Framed
Overall Size: 15 inches by 12 inches
See Color Illustration
Estimate 100/200



1498

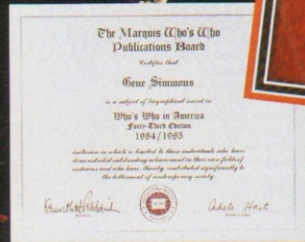


1496



1499

1502



1501



1503
Original KISS Platinum Express Card
#1980s
Original unused KISS platinum express
card that entitled the bearer to two
complimentary tickets to any KISS concert
at any time, anywhere in the world. Originally
used as a promotion item for the most
dedicated KISS supporters, this piece is
included with its original presentation folder
mounted in Two-Sided Plexiglass with Base
Overall Size: 11 inches by 13 inches
See Color Illustration
Estimate 500/700



1503

1504
Original KISS Platinum
Express Card Presentation
Folders and Envelopes
Circa 1980s
A box of approximately 500
KISS Platinum Express
Lifetime Membership credit
card presentation folders
(without actual credit card)
with accompanying envelopes
printed with KISS logo and 655
Madison Avenue, New York, NY
10021 in silver and black.
Estimate 500/750



1505
Original GENE SIMMONS
Personally Owned Notes for
Proposed Book

1980
An original three-page document
detailing GS handwritten notes
for his proposed book THE
HISTORY OF KISS written on The
Baton Rouge Hilton stationery.
This treatment outlines opening
scene, interviews, animated
sequences, concert footage, etc.
Framed in Two-Sided Plexiglass
with Base
Overall Size: 14 inches by 25
inches
Estimate 1,500/2,000

1507
Original KISS Songbooks
Circa 1970s
A complete case of 48 KISS
songbooks including "KISS
Greatest Hits" copyright
1976, "More Super Songs of
the 70s" copyright 1976 and
"25 Super Sheets" copyright
1973.
Estimate 600/800



1505
Original KISS Commemorative Coins
from Australia
1980
A collection of approximately 1,200
gold-colored metal coins from KISS
framed 1980 tour of Australia,
featuring images of the four band
members on one side and the KISS
logo on the reverse side. Coins are
housed in three brown metal cases.
Diameter: 1 inches
See Color Illustration
Estimate 2,500/3,500

1505

1508
Original GENE SIMMONS
Personally Owned RIAA Gold
Record Award for I WAS MADE
FOR LOVIN' YOU
1979
An original RIAA gold 45 award
presented to JIM BURGESS to
commemorate the sale of
over one million copies of
the CASABLANCA RECORDS
single I WAS MADE FOR
LOVIN' YOU.
Matted and Framed
17 inches by 13 inches
See Color Illustration
Estimate 700/900



1508

1509

1509
Original GENE SIMMONS
Personally Owned RIAA
Gold Record Award for I
WAS MADE FOR LOVIN' YOU
1979
An original RIAA gold 45 award
presented to DANIALESTER to
commemorate the sale of over
one million copies of the
CASABLANCA RECORDS single
I WAS MADE FOR LOVIN' YOU.
Matted and Framed
17 inches by 13 inches
See Color Illustration
Estimate 700/900

1510
Original PAUL STANLEY Personally
Owned Christmas Card Layout
Design
1978
An original design layout featuring
PAUL STANLEY dressed as Santa
Claus on the cover of the card with
printer's notes on the paper stock,
quantity and color selection.
Matted and Framed
Overall Size: 23 inches by 30
inches
See Color Illustration
Estimate 200/300



1510

1511

1511
Original KISS Press Bio Layouts
1978
Two original typed documents
used as part of a design layout
for PAUL STANLEY and GENE
SIMMONS' press bios used in
conjunction with release of
their individual KISS SOLO
albums.
Matted and Framed
Overall Size: 25 inches by
30 inches
See Color Illustration
Estimate 1,000/1,500

